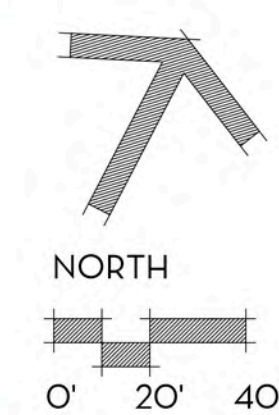




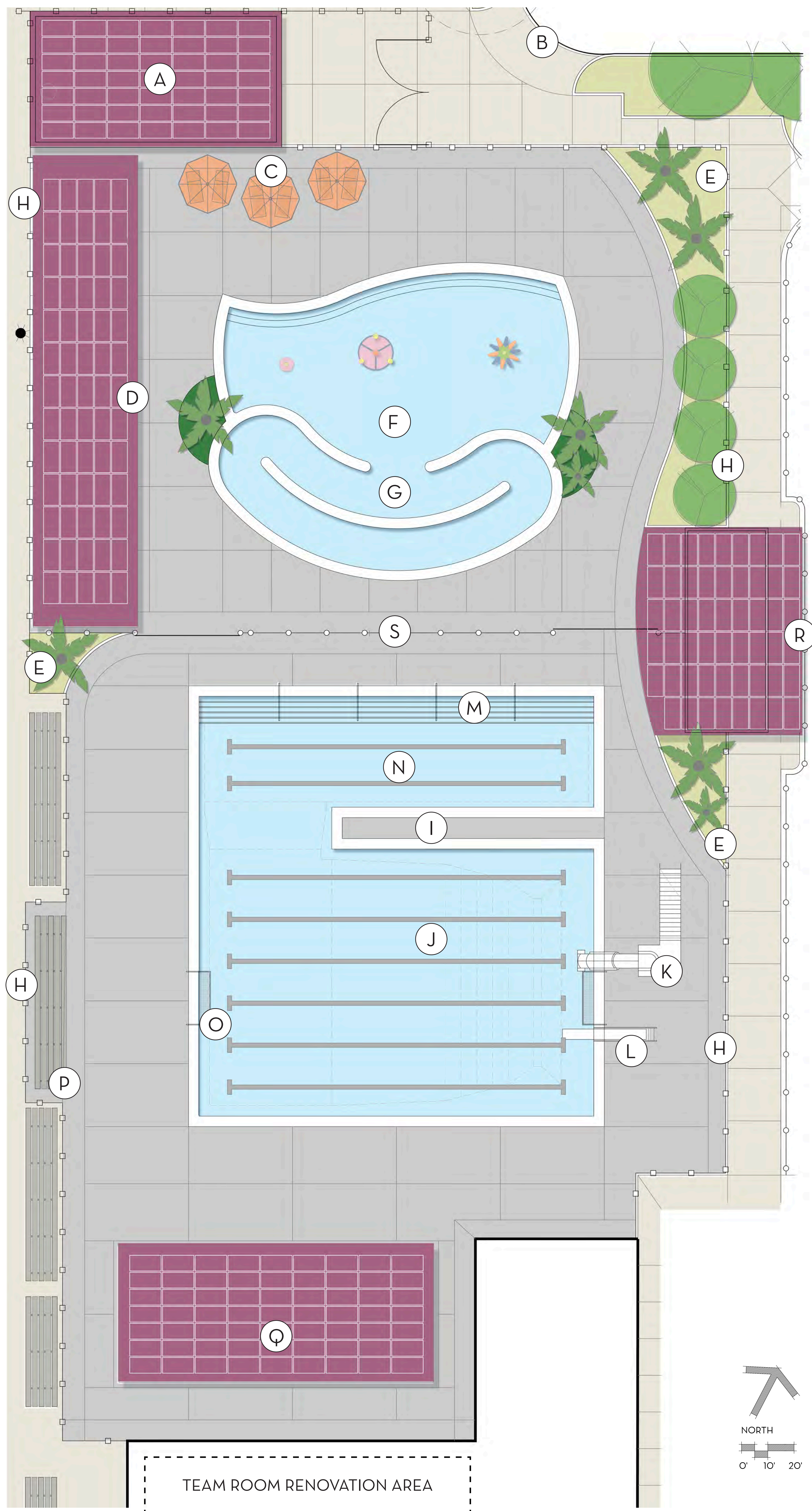
LAYOUT KEYNOTES

1. CLARKSBURG RD PARKING LOT WITH (33) SPACES INCLUDING (2) ADA STALLS
2. SHADED TURF RECREATION AREA
3. GIRLS SOFTBALL FIELD WITH +/- 200' OUTFIELD LENGTH, (2) DUGOUTS, (1) SET OF 4-ROW BLEACHER SEATING AND (2) BULLPENS
4. CONCRETE WALKING TRAIL (FIGURE-EIGHT CIRCUIT DISTANCE OF .60 MILES)
5. EXISTING MATURE OAK TREES PLANTED BETWEEN FENCE AND STREET IN GOOD CONDITION
6. NEW SHADE TREE PLANTING, TYP.
7. REMOVABLE OUTFIELD FENCE
8. TRACK AND FIELD FENCING
9. EXISTING MATURE SYCAMORE TREES PLANTED BETWEEN FENCE AND STREET IN GOOD CONDITION
10. GATHERING AREA WITH (3) PICNIC TABLES
11. POOL EQUIPMENT BUILDING WITH SOLAR ARRAY AND ACCESS DRIVE AISLE OFF OF SACRAMENTO STREET/WILLOW AVENUE
12. SHADE SHELTER WITH SOLAR ARRAY
13. AQUATIC CENTER ENTRY, CONCESSION STAND, RESTROOM, AND OVERHEAD SHADE STRUCTURE WITH SOLAR ARRAY
14. AQUATIC CENTER WITH RECREATION POOL, (6) LANE COMPETITION POOL, AND DIVIDING FENCE WITH (2) SLIDING GATES
15. SHADE SHELTER WITH SOLAR ARRAY (SWIM-MEET READY-BENCH SEATING)
16. BIO-SWALE PLANTING AREA TO HANDLE STORMWATER RUNOFF FROM NEW PARKING AREAS, TYP.
17. SOCCER FIELD FENCING
18. U-12 SOCCER FIELD (165' x 240')
19. SACRAMENTO STREET PARKING WITH (36) SPACES INCLUDING (2) ADA STALLS
20. PERMEABLE PAVING AT ADA PARKING STALLS, TYP.
21. WALKING TRAIL CONNECTION TO CROSSWALKS AT SACRAMENTO AND N. SCHOOL STREET
22. U-12 SOCCER FIELD (165' x 240') WITH EXPANDED SOCCER FIELD OPTION UP TO 200' x 320'
23. EXISTING BASEBALL FIELD WITH ENHANCED SPECTATOR SEATING, DUGOUTS, BULLPENS, AND FENCING
24. RELOCATED BATTING CAGE
25. N. SCHOOL STREET PARKING WITH (34) SPACES INCLUDING (2) ADA STALLS
26. ADDITIONAL N. SCHOOL STREET PARKING WITH (15) SPACES. NO TREES REMOVED, EXPANDED REDWOOD GROVE WITH UNDERSTORY PLANTING
27. ENHANCED CORNER LANDSCAPING WITH ADDED CONCRETE WALKING TRAIL CONNECTION TO EXISTING SIDEWALKS. EXISTING PARKING LOT ENTRANCE REMOVED
28. EXPANDED (8) LANE TRACK
29. HIGH JUMP AND DISCUS/SHOT PUT
30. RELOCATED ATHLETIC STORAGE
31. LONG-JUMP AND TRIPLE-JUMP PITS
32. POLE VAULT PIT
33. U-8 SOCCER FIELD (70' x 105')
34. AQUATIC CENTER FENCING
35. TENNIS COURT (60' x 120')

PARKING SUMMARY	# SPACES	# ADA SPACES	SUB-TOTAL
CLARKSBURG ROAD	31	2	33
SACRAMENTO STREET	34	2	36
N. SCHOOL STREET (1)	32	2	34
N. SCHOOL STREET (2)	15	-	15
TOTAL			118



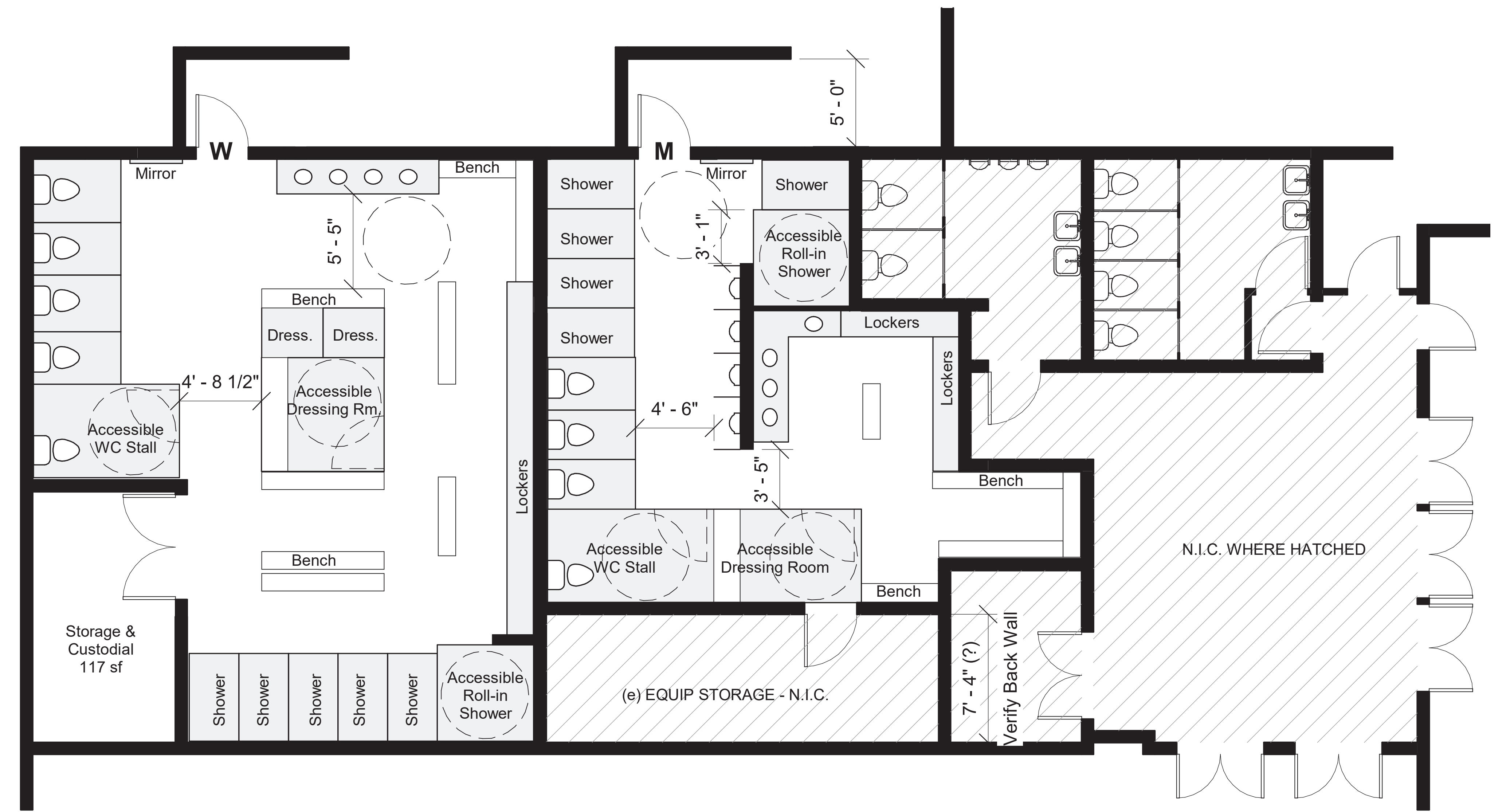
CLARKSBURG COMMUNITY PARK AND AQUATIC CENTER - MASTER PLAN



AQUATIC CENTER KEYNOTES

- | | |
|---|--|
| A. POOL EQUIPMENT BUILDING W/SOLAR ARRAY | K. SLIDE |
| B. MAINTENANCE ACCESS GATES | L. DIVING BOARD |
| C. DECK TABLES W/ UMBRELLAS | M. POOL ENTRY STEPS WITH TEACHING STATIONS |
| D. SHADE SHELTER WITH SOLAR ARRAY | N. WARM-UP LANES |
| E. LANDSCAPE AREA, TYP. | O. WATER POLO GOALS |
| F. RECREATION POOL W/ SPRAYGROUND | P. POOL BLEACHERS (1) |
| G. CURRENT CHANNEL | Q. SHADE SHELTER WITH SOLAR ARRAY (SWIM-MEET READY- BENCH SEATING) |
| H. AQUATIC CENTER PERIMETER FENCING, TYP. | R. AQUATIC CENTER ENTRY (SEE LAYOUT KEYNOTE #13) |
| I. OBSERVATION / LIFEGUARD PENINSULA | S. DIVIDING FENCE WITH (2) SLIDING GATES |
| J. COMPETITION / TRAINING SWIMMING POOL | |

PRELIMINARY MAXIMUM PROGRAM NEEDS
MEN'S LOCKER ROOM Men's Toilets - 4 Men's Urinals - 4 Men's Lavs - 4 Men's Showers - 6 Men's Dressing Room Space - 125 sf (Providing 220 sf of changing space)
WOMEN'S LOCKER ROOM Women's Toilets - 5 Women's Lavs - 4 Women's Showers - 6 Women's Dressing Room Space - 250 sf (Providing 400 sf of changing space)
CUSTODIAL Custodial/Storage - 80-100 sf
FLOOR PLAN AREAS
Men's Locker Room - 565 SF Women's Locker Room - 833 SF Custodial - 117 sf

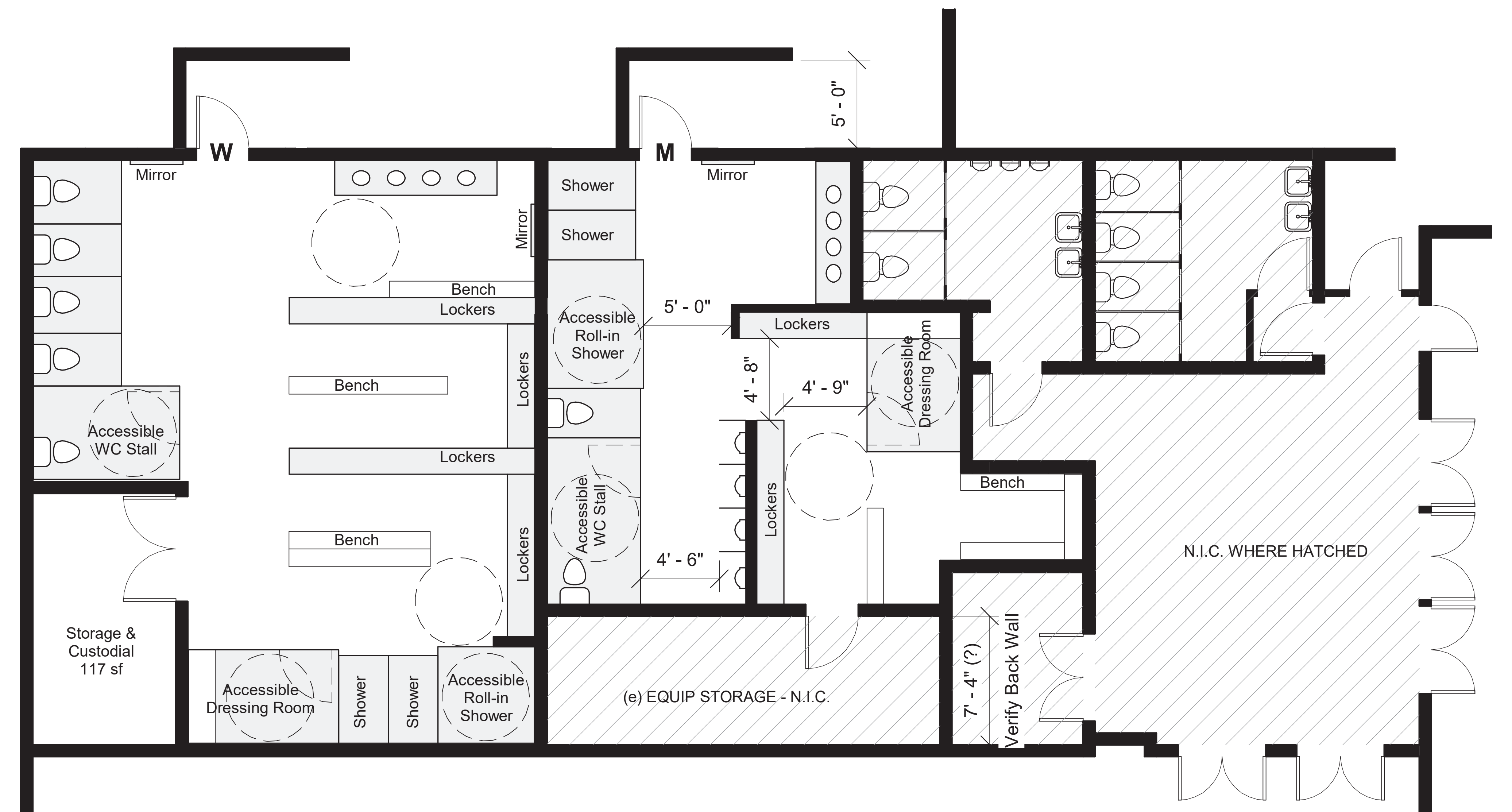


DELTA HIGH SCHOOL TEAM ROOM RENOVATION PLAN - ALT 1

(maximum facility program)

1/4" = 1'-0" SCALE

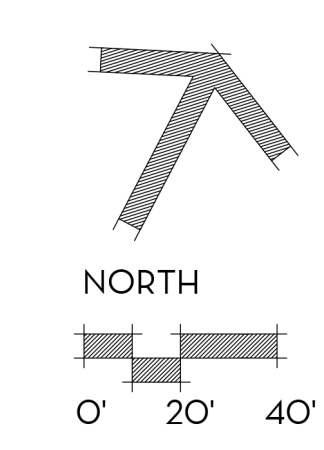
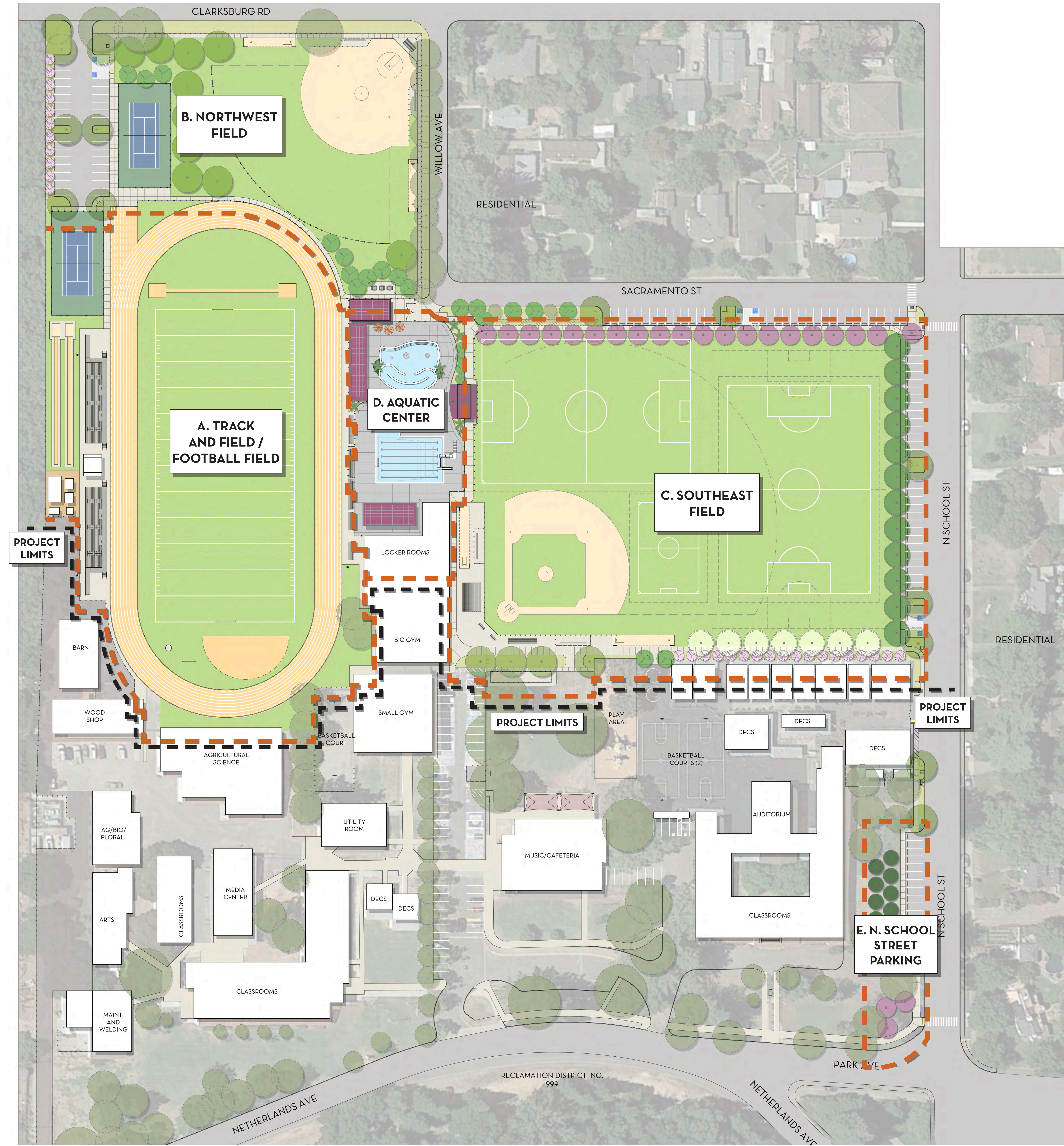
ALTERNATIVE PROGRAM NEEDS
MEN'S LOCKER ROOM Men's Toilets - 2 Men's Urinals - 4 Men's Lavs - 4 Men's Showers - 3 Men's Dressing Room Space - 125 sf (Providing 225 sf of changing space)
WOMEN'S LOCKER ROOM Women's Toilets - 5 Women's Lavs - 4 Women's Showers - 3 Women's Dressing Room Space - 250 sf (Providing 290 sf of changing space)
CUSTODIAL Custodial/Storage - 80-100 sf
FLOOR PLAN AREAS
Men's Locker Room - 565 SF Women's Locker Room - 833 SF Custodial - 117 sf
ADDITIONAL FIXTURES ON POOL DECK:
2 new all-gender family restrooms in new structure 6 showers located on pool deck



DELTA HIGH SCHOOL TEAM ROOM RENOVATION PLAN - ALT 2

(modified facility program w/ some facilities provided on pool deck)

1/4" = 1'-0" SCALE



CLARKSBURG COMMUNITY PARK AND AQUATIC CENTER - IMPROVEMENT ZONES



VIEW 1 - LOOKING NORTH



VIEW 2 - LOOKING SOUTH